

NGEMC K40 MATERIALS INSTALLED AND PROVIDED BY THE CUSTOMER.

ITEM #	QUANTITY	DESCRIPTION
1	1	6"x6" PRESURE TREATED TIMBER OR POLE 16' OR 20' LONG
2	2	2"x6"x16' PRESURE TREATED BRACE
3	1	2"x4" PRESURE TREATED STAKE
4	1	100 AMP METER BASE ISSUED BY NGEMC (SEE NOTE f)
5	1	60A OR 100A WEATHER PROOF BREAKER BOX, BONDED
6	2	SINGLE POLE BREAKERS *
7	1	WEATHER PROOF BOX AND IN USE COVER
8	1	120V GROUNDED RECEPTACLE WITH GFI PROTECTION
9	1	# 6 CU (MINIMUM) GROUND WIRE
10	1	GROUND ROD CONNECTOR CLAMP
11	1	5/8" x 8' GROUND ROD
12	1	3 #2 AL CONDUCTORS, NEUTRAL MARKED SEPARATELY
13	1	1.25" CONDUIT WITH WEATHERHEAD (SEE NOTE g)
14	AS REQD	APPROVED CONDUIT STRAPS

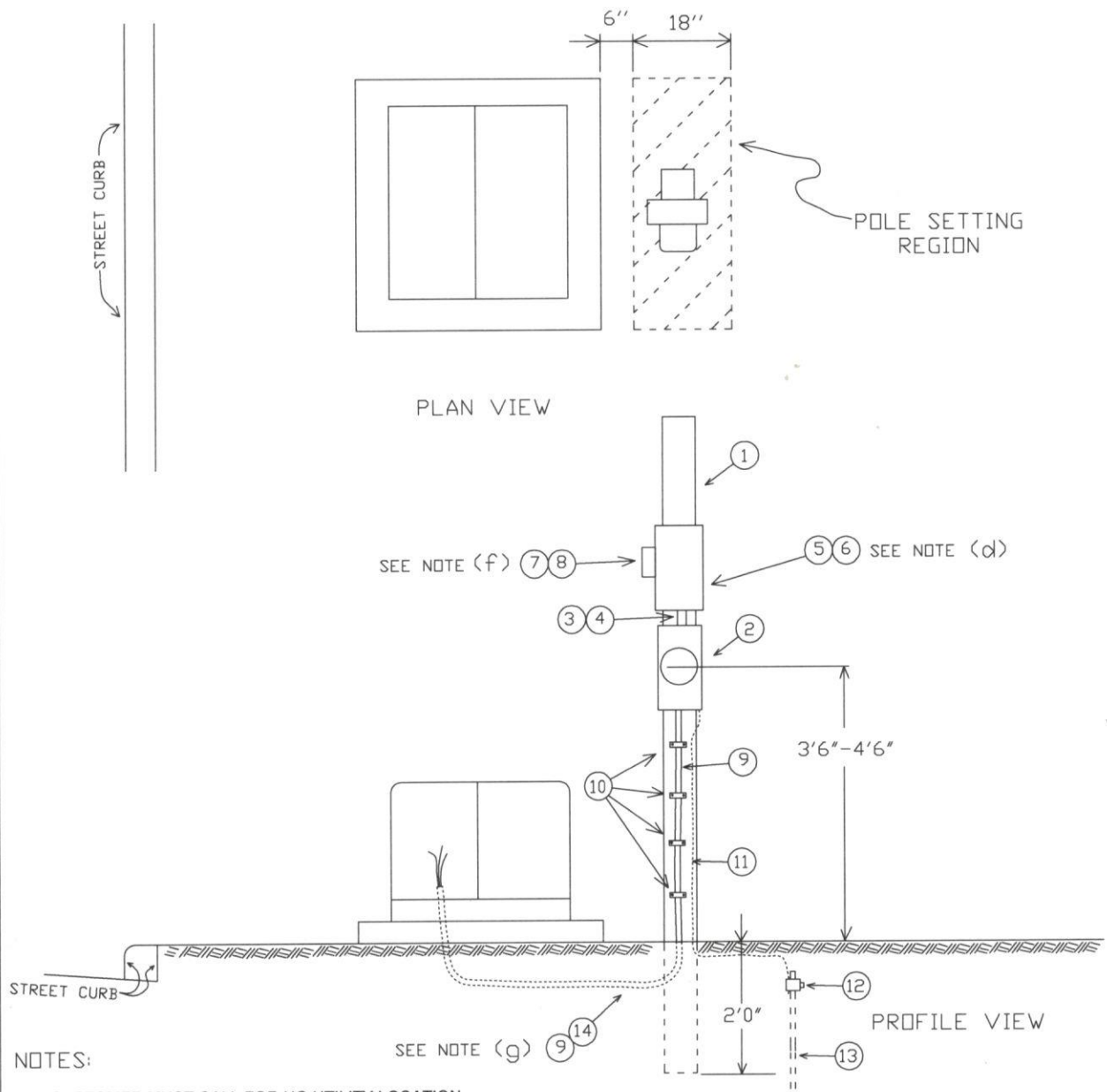
* MUST HAVE ADEQUATE INTERRUPTING RATING

TO CHECK FOR UG UTILITY LOCATION CONTACT THE GEORGIA UTILITY PROTECTION CENTER AT 1-800-282-7411

MARCH 20, 2007

OVERHEAD TEMPORARY SERVICE

NGEMC K40-T



NOTES:

- (a) CUSTOMER MUST CALL FOR UG UTILITY LOCATION BEFORE DIGGING OR DRIVING GROUND ROD. CONTACT THE GEORGIA UTILITY PROTECTION CENTER AT 1-800-282-7411.
- (b) THE POLE SHOULD BE WELL TAMPED TO PROVIDE STABILITY FOR METER INSTALLATION.
- (c) FOR 100 A AND BELOW SERVICE SIZE, INSTALL 3 # 4 CU THWN CONDUCTORS WITH THE NEUTRAL MARKED BY A SEPARATE COLOR OR TAPE AT BOTH ENDS.
- (d) THE SERVICE ENTRANCE CONDUCTORS FROM THE BOTTOM TERMINALS OF THE METER MUST CONNECT TO THE TOP TERMINALS OF THE BREAKERS.
- (e) THE GROUNDING ELECTRODE WIRE IS NOT PERMITTED INSIDE THE NGEMC METER BASE.
- (f) THE OUTLET BOXES MAY BE CONNECTED USING GALVANIZED NIPPLES, OR LIQUIDTIGHT FLEXIBLE NON METALLIC CONDUIT ON EITHER SIDE OR THE BACK OF THE POLE.
- (g) NGEMC TO DIG TRENCH AND PLACE SOURCE CONDUCTORS 18" DEEP. IF THIS DEPTH CAN NOT BE OBTAINED, THE FLEXIBLE CONDUIT MAY PLACED 12" DEEP WITH SUPPLEMENTAL PROTECTION. THIS PROTECTION MAY BE PROVIDED BY INSTALLING THE CONDUIT UNDER THE TRANSFORMER PAD.
- (j) A METER AND SWITCH BOX COMBINATION MAY BE INSTALLED IN PLACE OF THE EQUIVALENT MATERIALS LISTED, BUT NGEMC WILL NOT BE RESPONSIBLE FOR OR ABLE TO REPAIR THIS METERING EQUIPMENT.
- (k) ALL COVERS ON METER BASES AND BOXES MUST BE IN PLACE BEFORE THE SERVICE CAN BE INSTALLED.

MATERIALS INSTALLED AND PROVIDED BY CUSTOMER

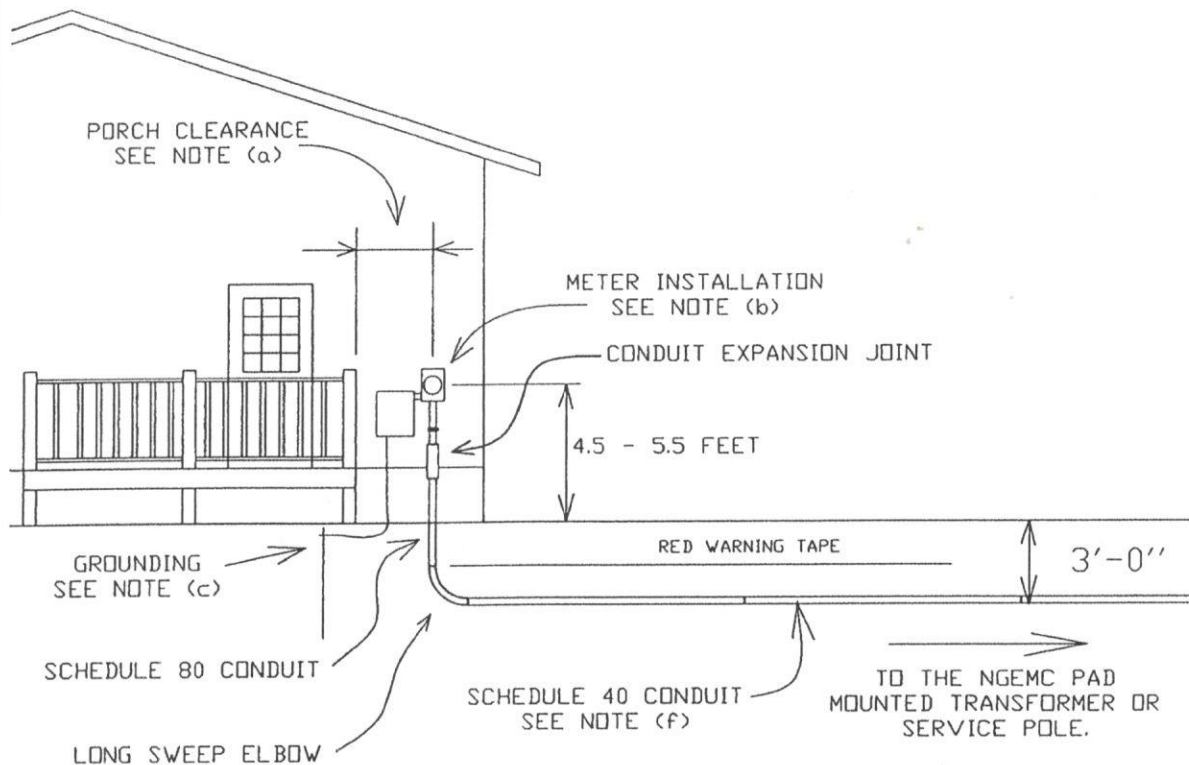
ITEM #	QUANTITY	DESCRIPTION
1	1	6" X 6" PRESSURE TREATED POST 10' LONG.
2	1	100 A METER BASE, ISSUED BY NGEMC. SEE NOTE (j)
3	1	1 - 1/4" METER BASE HUB, ISSUED BY NGEMC
4	1	1 - 1/4" CONNECTOR NIPPLE
5	1	60A OR 100A WEATHER PROOF BREAKER BOX, BONDED
6	2	SINGLE POLE BREAKERS *
7	1	WEATHER PROOF BOX AND IN USE COVER
8	1	120V GROUNDED RECEPTACLE WITH GFI PROTECTION
9	15'	1" LIQUIDTIGHT FLEXIBLE NONMETALLIC CONDUIT
10	4	2 HOLE OR 1 HOLE CONDUIT STRAP
11	1	# 6 CU (MINIMUM) GROUND WIRE
12	1	GROUND ROD CONNECTOR CLAMP
13	1	5/8" X 8' GROUND ROD
14	15'	3 - #4 CU THWN CONDUCTORS, NEUTRAL MARKED

* MUST HAVE ADEQUATE INTERRUPTING RATING

MARCH 20, 2007

UNDERGROUND TEMPORARY
SERVICE

NGEMC UK40-T



FRONT VIEW

NOTES:

(a) THE METER MUST BE LOCATED A MINIMUM OF 2' MEASURED HORIZONTALLY FROM ALL PORCHES OR DECKS. THE METER SHALL NOT BE INSTALLED ABOVE OR BELOW FLOORS ASSOCIATED WITH PORCHES OR DECKS.

(b) THE CENTER OF THE METER BASE WILL BE MOUNTED 4.5' - 5.5' ABOVE THE GROUND TO SUBSTANTIAL STRUCTURE. CHECK WITH THE LOCAL ELECTRICAL INSPECTOR FOR THE APPROVED LOCATION OF THE MAIN DISCONNECT. ALL COVERS ON METER BASES AND PANEL BOXES MUST BE IN PLACE BEFORE THE SERVICE CAN BE INSTALLED. NGEMC WILL NOT BE RESPONSIBLE FOR DAMAGE TO NON NGEMC METER BASES OR BOXES.

(c) THE FACILITIES SHALL BE GROUNDED AS REQUIRED BY THE NEC OR PER REQUIREMENTS OF THE LOCAL ELECTRICAL INSPECTOR. THE GROUNDING ELECTRODE WIRE IS NOT PERMITTED INSIDE THE NGEMC METER BASE.

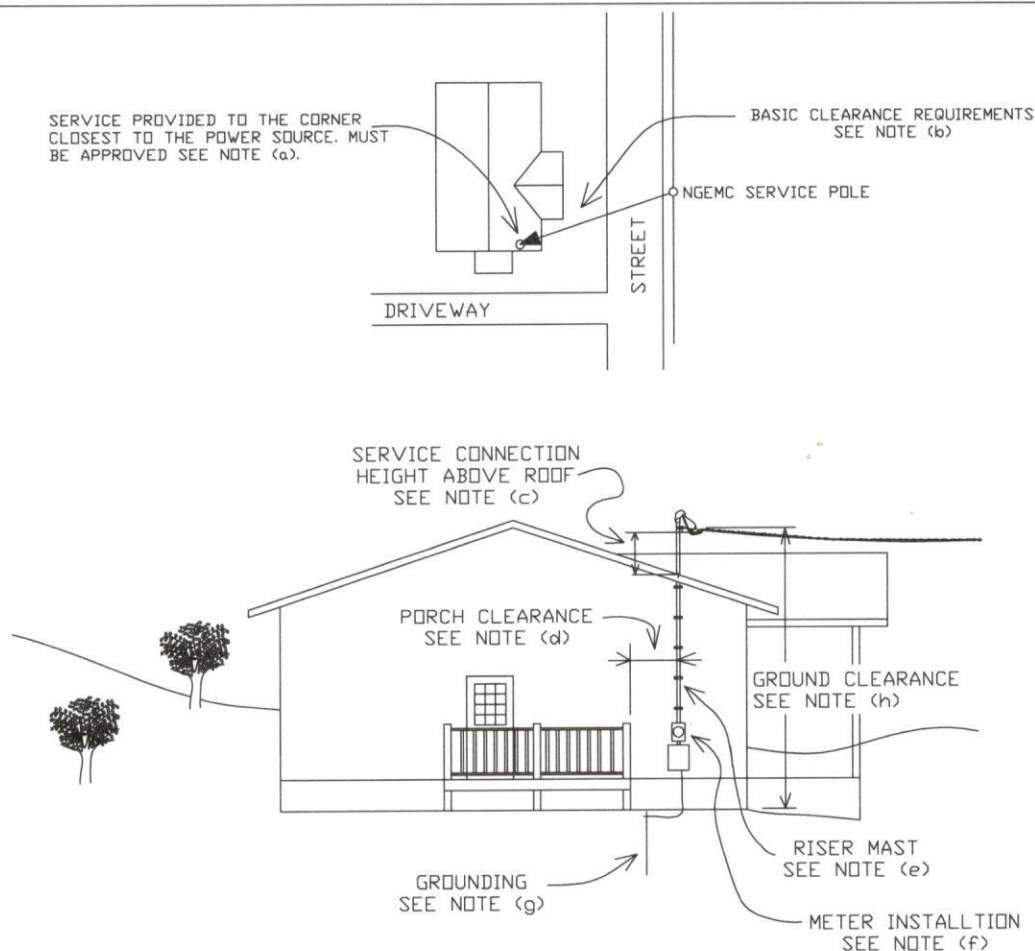
(e) SERVICE CONDUCTORS FROM THE TRANSFORMER TO THE HOUSE SHALL BE PLACED IN 2.5 INCH SCHEDULE 40 CONDUIT, AND BURIED 36 INCHES DEEP. A RED WARNING TAPE WILL BE PLACED 12" ABOVE THE CONDUIT.

(f) THE CUSTOMER IS REQUIRED TO DIG A 3' DEEP BY 3' LONG DITCH NEAR THE HOUSE AT THE METER LOCATION. THE CUSTOMER WILL PROVIDE ONE STICK OF SCHEDULE 80 CONDUIT, CONDUIT EXPANSION JOINT, AND LONG SWEEP ELBOW.

AUGUST 14, 2012

UNDERGROUND SERVICE

NGEMC UK40



NOTES:

(a) PLACE METER ON THE CORNER OF THE BUILDING CLOSEST TO THE POWER SOURCE. THE METER LOCATION AND SERVICE ATTACHMENT HEIGHT MUST BE APPROVED BY A NGEMC DESIGN TECHNICIAN.

(b) AFTER ATTACHMENT TO THE MAST, THE SERVICE IS NOT ALLOWED TO PASS OVER ATTACHED ROOFS, PORCHES, DECKS, OR SWIMMING POOLS.

(c) THE SERVICE CONNECTION MINIMUM HEIGHT ABOVE THE ROOF IS LISTED BELOW:
 ROOF ACCESSIBLE ----- 10.0' BELOW THE ATTACHMENT AND DRIP LOOP.
 ROOF NOT ACCESSIBLE -- 3.0'* BELOW THE ATTACHMENT AND DRIP LOOP.

(d) THE SERVICE MAST MUST BE LOCATED A MINIMUM OF 2' MEASURED HORIZONTALLY FROM ALL PORCHES OR DECKS. THE METER SHALL NOT BE INSTALLED ABOVE OR BELOW FLOORS ASSOCIATED WITH PORCHES OR DECKS.

(e) THE SERVICE MAST WILL BE GALVANIZED RIDGED CONDUIT WITH A MINIMUM DIAMETER SIZE OF 2 INCHES. A CONDUIT STRAP WILL BE PLACED NEAR THE TOP OF THE METER BASE AND NEAR THE TOP WHERE THE CONDUIT PASSES THROUGH THE ROOF OVERHANG. INTERMEDIATE STRAPS WILL BE LOCATED IN BETWEEN. THE STRAPS SHALL BE MOUNTED TO SUBSTANTIAL STRUCTURE. NO CONDUIT SPLICES WILL BE ALLOWED NEAR OR ABOVE THE ROOF.

(f) THE CENTER OF THE METER BASE WILL BE MOUNTED 4.5' - 5.5' ABOVE THE GROUND TO SUBSTANTIAL STRUCTURE. CHECK WITH THE LOCAL ELECTRICAL INSPECTOR FOR THE APPROVED LOCATION OF THE MAIN DISCONNECT. ALL COVERS ON METER BASES AND PANEL BOXES MUST BE IN PLACE BEFORE THE SERVICE CAN BE INSTALLED. NGEMC WILL NOT BE RESPONSIBLE FOR DAMAGE TO NON NGEMC METER BASES OR BOXES.

(g) THE FACILITIES SHALL BE GROUNDED AS REQUIRED BY THE NEC OR PER REQUIREMENTS OF THE LOCAL ELECTRICAL INSPECTOR. THE GROUNDING ELECTRODE WIRE IS NOT PERMITTED INSIDE THE NGEMC METER BASE.

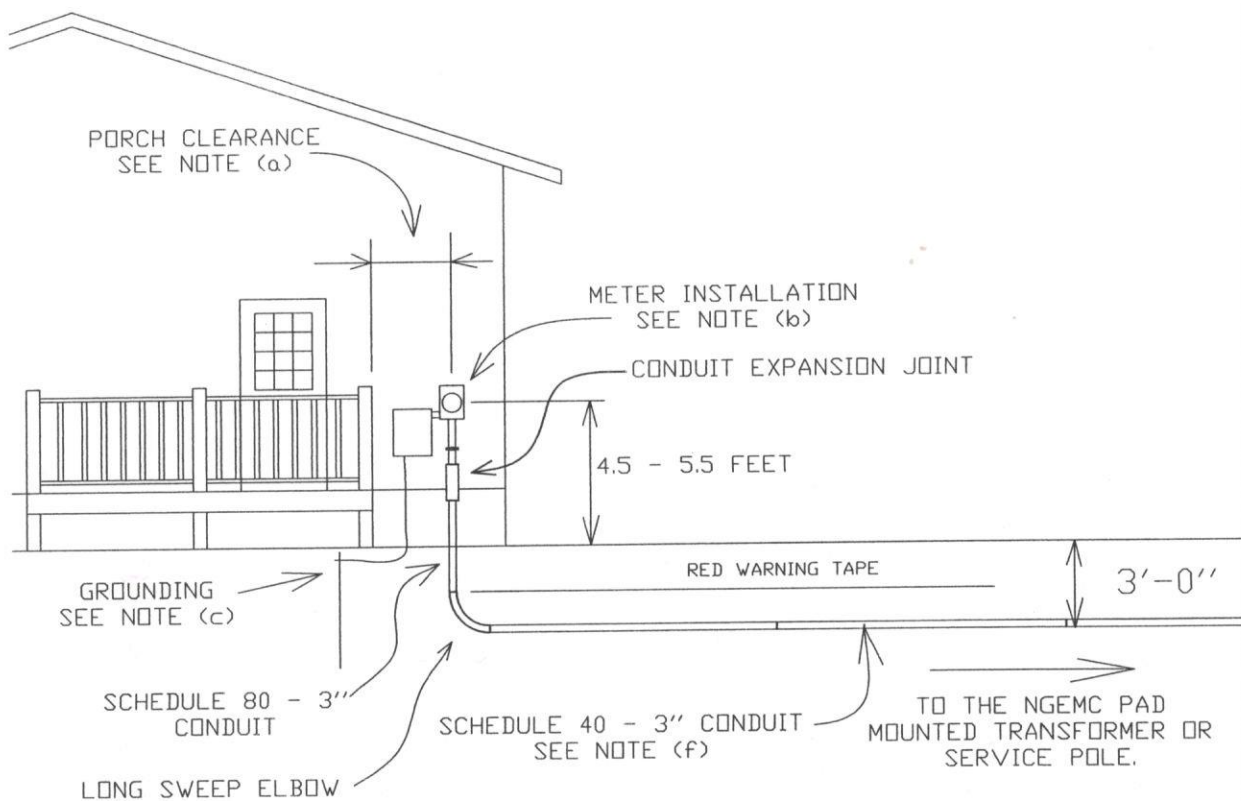
(h) MINIMUM GROUND CLEARANCE WILL BE AS FOLLOWS:
 12.5' AT THE POINT OF ATTACHMENT NEAR THE HOUSE.
 12.5' OVER AREAS SUBJECT TO PEDESTRIAN USE ONLY.
 16.5' OVER DRIVEWAYS NOT SUBJECT TO TRUCK TRAFFIC.
 18.0' OVER STREETS AND AREAS SUBJECT TO TRUCK TRAFFIC.

* THIS DIMENSION MAY BE CHANGED TO 1'-6" IF THE METER IS MOUNTED TO THE OUTSIDE PERIMETER OF THE STRUCTURE, THE STRUCTURE HAS LESS THAN A 4' ROOF OVERHANG, AND THE SERVICE-TO-ROOF CLEARANCE AT A DISTANCE OF 6' FROM THE MAST IS 3' OR MORE.

SEPT 23, 2005

OVERHEAD SERVICE
WITH MAST RISER

NGEMC K40-M



FRONT VIEW

NOTES:

(a) THE METER MUST BE LOCATED A MINIMUM OF 2' MEASURED HORIZONTALLY FROM ALL PORCHES OR DECKS. THE METER SHALL NOT BE INSTALLED ABOVE OR BELOW FLOORS ASSOCIATED WITH PORCHES OR DECKS.

(b) THE CENTER OF THE METER BASE WILL BE MOUNTED 4.5' - 5.5' ABOVE THE GROUND TO SUBSTANTIAL STRUCTURE. CHECK WITH THE LOCAL ELECTRICAL INSPECTOR FOR THE APPROVED LOCATION OF THE MAIN DISCONNECT. ALL COVERS ON METER BASES AND PANEL BOXES MUST BE IN PLACE BEFORE THE SERVICE CAN BE INSTALLED. NGEMC WILL NOT BE RESPONSIBLE FOR DAMAGE TO NON NGEMC METER BASES OR BOXES.

(c) THE FACILITIES SHALL BE GROUNDED AS REQUIRED BY THE NEC OR PER REQUIREMENTS OF THE LOCAL ELECTRICAL INSPECTOR. THE GROUNDING ELECTRODE WIRE IS NOT PERMITTED INSIDE THE NGEMC METER BASE.

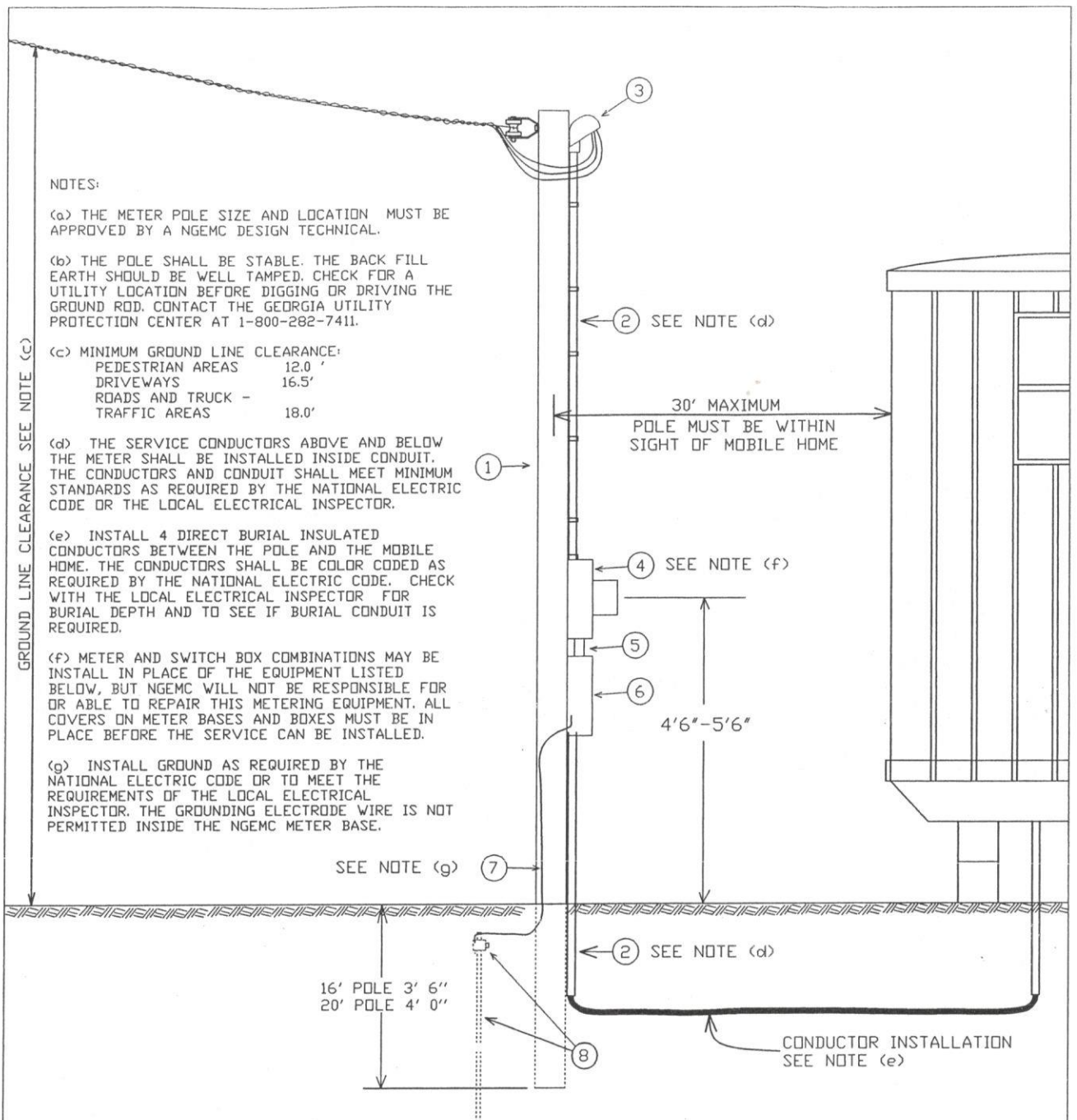
(e) SERVICE CONDUCTORS FROM THE TRANSFORMER TO THE HOUSE SHALL BE PLACED IN 3.0 INCH SCHEDULE 40 CONDUIT, AND BURIED 36 INCHES DEEP. A RED WARNING TAPE WILL BE PLACED 12" ABOVE THE CONDUIT.

(f) THE CUSTOMER IS REQUIRED TO DIG A 3' DEEP BY 3' LONG DITCH NEAR THE HOUSE AT THE METER LOCATION. THE CUSTOMER WILL PROVIDE ONE STICK OF SCHEDULE 80 - 3.0 INCH CONDUIT, CONDUIT EXPANSION JOINT, AND LONG SWEEP ELBOW.

JANUARY 29, 2015

UNDERGROUND SERVICE

NGEMC UK40



NGEMC K40-MH MATERIALS INSTALLED AND PROVIDED BY THE CUSTOMER.

ITEM #	QUANTITY	DESCRIPTION
1	1	6"x6" PRESURE TREATED TIMBER OR POLE 16' OR 20' LONG
2	1	CONDUIT WITH STRAPS
3	1	CONDUIT WEATHERHEAD
4	1	METER BASE ISSUED BY NGEMC (SEE NOTE f)
5	1	CONDUIT JOINING NIPPLE
6	1	WEATHER PROOF MAIN DISCONNECT BOX WITH BREAKER
7	1	#6 CU (MINIMUM) GROUND WIRE
8	1	GROUND ROD COMPLETE WITH CLAMP

MARCH 20, 2007

OVERHEAD SERVICE
MOBILE HOME

NGEMC K40-MH

